

PSevents compositions

## Unlimited layouts !!!!



## Introduction

PSevents contains several types of layouts to create different photo compositions. In addition to the built-in layouts, it is possible to create an unlimited collection of custom designs by editing the layouts.xml file that contains the data for the PSevents compositions layout engine.

C:\Program Files (x86)\PSSolutions\PSevents\Decoration\Layouts\layouts.xml

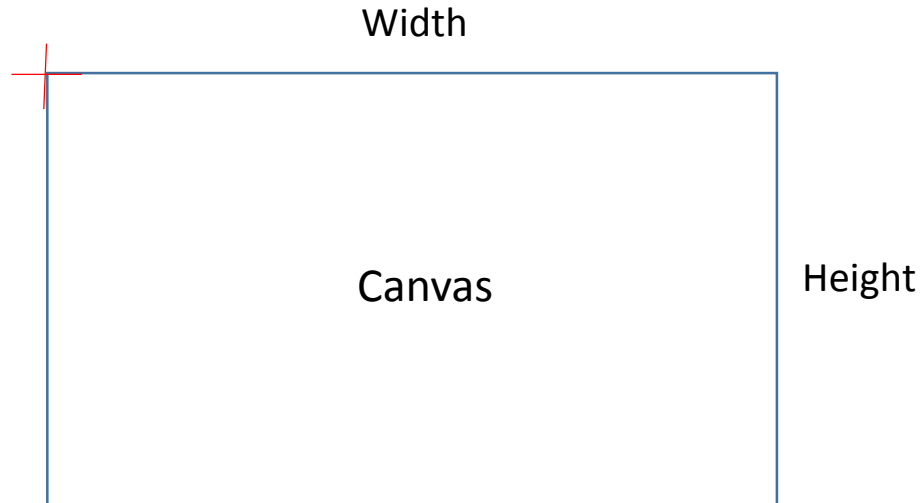
or

C:\Program Files\PSSolutions\PSevents\Decoration\Layouts\layouts.xml

Consider each layout like a canvas where you can place different photos, with different sizes, different positions and different angles.

X = 0

Y = 0



## Layouts.xml

<Layout>	Label description
<pre>&lt;Id&gt;DOBLE@10X15&lt;/Id&gt;</pre>	<ul style="list-style-type: none"> <li>- Unique Id for each layout</li> </ul>
<pre>&lt;Name&gt;   &lt;Cms&gt;DOUBLE WALLET@10x15cm&lt;/Cms&gt;   &lt;Inches&gt;DOUBLE WALLET@4x6in&lt;/Inches&gt; &lt;/Name&gt;</pre>	<ul style="list-style-type: none"> <li>- Layout name that will appear in the compositions layout list</li> </ul>
<pre>&lt;CanvasSize&gt;   &lt;Width&gt;1578&lt;/Width&gt;   &lt;Height&gt;1039&lt;/Height&gt; &lt;/CanvasSize&gt;</pre>	<ul style="list-style-type: none"> <li>- Definition of canvas dimension in tenths of a millimeter.. It is recommended to be equal to paper size.</li> </ul>
<pre>&lt;Images&gt;   &lt;Image&gt;     &lt;Bounds&gt;       &lt;X&gt;1174&lt;/X&gt;       &lt;Y&gt;519&lt;/Y&gt;       &lt;Height&gt;1039&lt;/Height&gt;       &lt;Width&gt;771&lt;/Width&gt;     &lt;/Bounds&gt;     &lt;ZOrder&gt;0&lt;/ZOrder&gt;     &lt;Rotation&gt;0&lt;/Rotation&gt;   &lt;/Image&gt; &lt;/Images&gt; &lt;/Layout&gt;</pre>	<ul style="list-style-type: none"> <li>- Collection of images</li> <li>- Image layout definition</li> <li>- Horizontal position of the center of the image in tenths of a millimeter.</li> <li>- Vertical position of the center of the image in tenths of a millimeter.</li> <li>- Height of the image in tenths of a millimeter.</li> <li>- Width of the image in tenths of a millimeter.</li> <li>- Angle of the image in degrees</li> </ul>

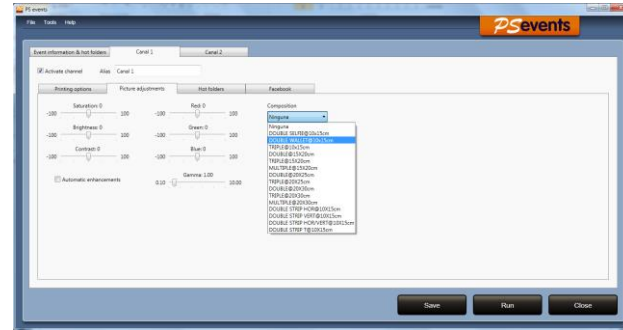
## Layouts.xml

```

<Layout>
  <Id>DOUBLE@10X15</Id>
  <Name>
    <Cms>DOUBLE WALLET@10x15cm</Cms>
    <Inches>DOUBLE WALLET@4x6in</Inches>
  </Name>
  <CanvasSize>
    <Width>1578</Width>
    <Height>1039</Height>
  </CanvasSize>
  <Images>
    <Image>
      <Bounds>
        <X>403</X>
        <Y>519</Y>
        <Height>1039</Height>
        <Width>771</Width>
      </Bounds>
      <ZOrder>0</ZOrder>
      <Rotation>0</Rotation>
    </Image>
    <Image>
      <Bounds>
        <X>1174</X>
        <Y>519</Y>
        <Height>1039</Height>
        <Width>771</Width>
      </Bounds>
      <ZOrder>0</ZOrder>
      <Rotation>0</Rotation>
    </Image>
  </Images>
</Layout>
  
```

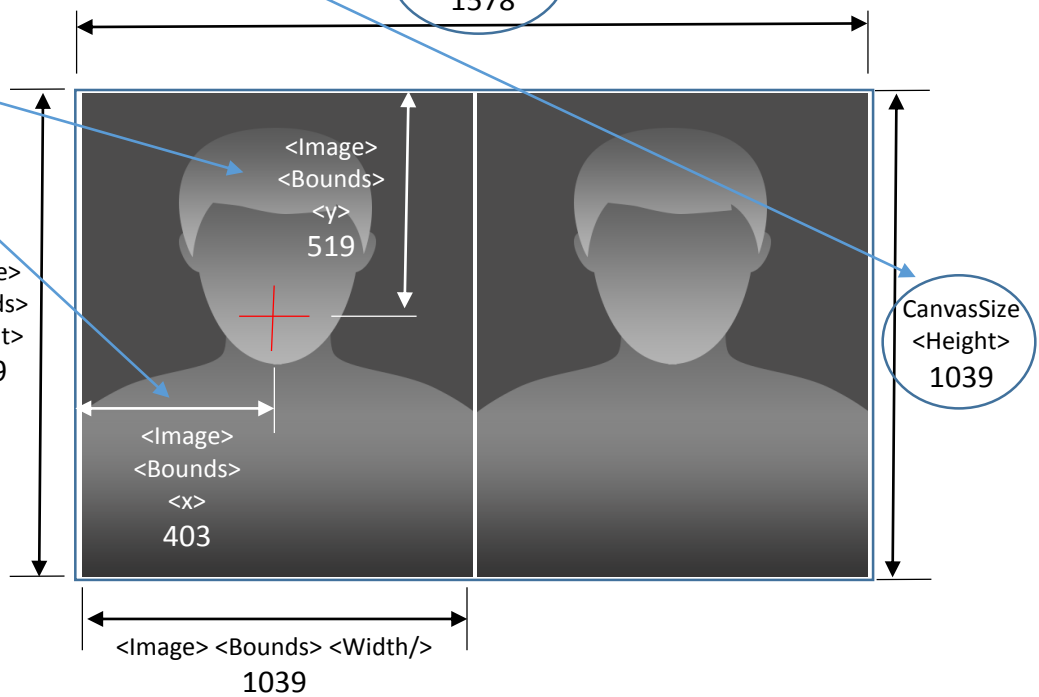
Unique Id for each layout

Layout description listed within composition layout list



Paper size

CanvasSize  
<Width/>  
1578



CanvasSize  
<Height/>  
1039

## Procedure to edit layouts.xml file

1. Exit from PSevents in case it is being in use
2. Make a copy of \* C:\Program Files (x86)\PSSolutions\PSevents\Decoration\Layouts\layouts.xml file and rename it to keep the original layouts.xml file contents .
3. Edit \* C:\Program Files (x86)\PSSolutions\PSevents\Decoration\Layouts\layouts.xml file to add new layouts or modify an existing one.
4. Launch PSevents and test your changes

\* Depending of your system, the route could be C:\Program Files \ ...