

# PRINTER DRIVER GUIDE

## (For Windows® CP-W5000 series)

Microsoft and Windows are registered trademarks of Microsoft Corporation in the United States and/or other countries.

Adobe, Adobe Photoshop are registered trademarks of Adobe Systems.

The various software packages mentioned in this manual are the registered trademarks of their respective companies.

Refer to the following web site to check the latest version of the printer driver.

[http://www.MitsubishiElectric.co.jp/vcp/support/driver\\_en.html](http://www.MitsubishiElectric.co.jp/vcp/support/driver_en.html)

### System requirements

Computer : Computer equipped with Pentium class CPU or more  
Main storage memory : 512 Mbytes or more  
Hard disk : Empty capacity 512 Mbytes or more  
USB cable : Be sure to use a cable 2 m or shorter.

\* Use the printer driver in an environment that your operating system works properly.

Driver folder	Supported operating system
CPW5000_Tool_DrvWinEN_Ver100	Windows® 7 (32-bit/64-bit)
	Windows® 8 (32-bit/64-bit)

\* CP-W5000 series printer supports USB 2.0 (Hi-Speed USB) interface. As USB 2.0 is fully upward-compatible with USB 1.1, CP-W5000 series printer can be used with a PC that supports USB 1.1 interface.

To use CP-W5000 series printer based on USB 2.0 (Hi-Speed USB), connect with a PC that supports USB 2.0 (Hi-Speed USB). For USB 2.0 (Hi-Speed USB) compatibility of your PC, contact the manufacturer of the PC.

\* Install the printer driver first, and then connect the printer to the PC.

\* You can not use different version of the driver at the same time.

When the driver has been already installed, uninstall it and then install this driver.

\* This printer driver is XPS compatible driver.

“XPS” is the abbreviation of the XML Paper Specification.

## Installation

### 1. Windows 7

#### 1.1. Installing the driver

\* Install the printer driver for Windows 7 before you connect the printer to your PC.

1) Start Windows® 7 operating system.

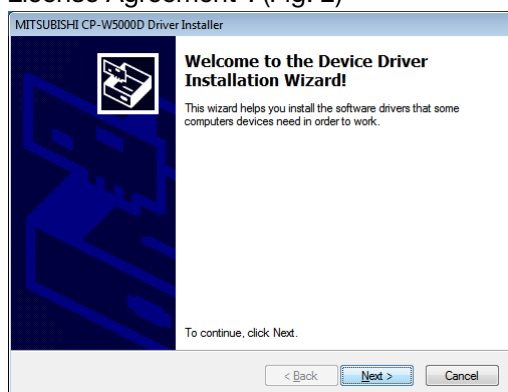
2) Logon as an Administrator or Administrator group members.

3) Start the installer (Install\_Drv.exe) by “Run as administrator”.

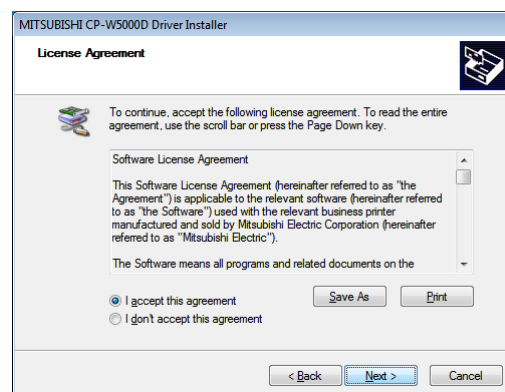
4) Install according to the instructions in the wizard.

Click “Next” button on “Welcome to the Device Driver Installation Wizard!”. (Fig. 1)

5) Accept the License Agreement and select “I accept this agreement” and click “Next” button on “License Agreement”. (Fig. 2)



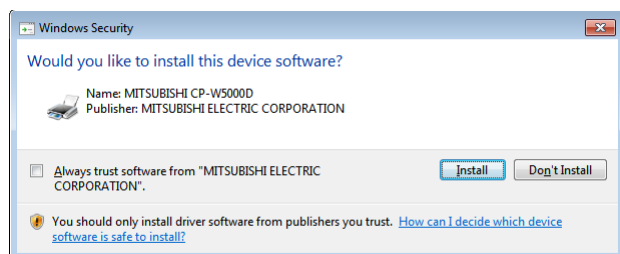
<Fig. 1>



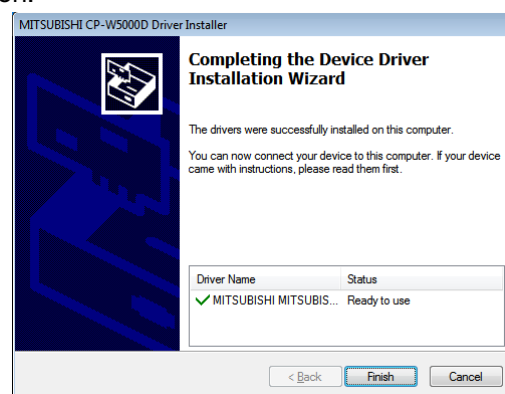
<Fig. 2>

6) Click “Install” button on “Windows Security”. (Fig. 3)

7) Window of (Fig. 4) appears on success in installation.



<Fig. 3>



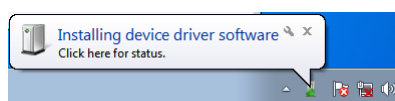
<Fig. 4>

#### 1.2. Installing the USB port

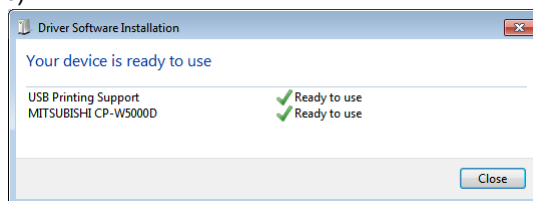
1) Power on the printer and connect it to your PC with USB cable.

2) The driver software will be automatically installed. Click the balloon to check the installation status. (Fig. 5)

3) Click “Close” button to finish the installation. (Fig. 6)



<Fig. 5>



<Fig. 6>

4) Icon of “MITSUBISHI CP-W5000D” will be added to the “Printers and Faxes” in the “Devices and Printers”.

5) Restart your PC.

## 2. Windows 8

### 2.1. Installing the driver

\* Install the printer driver for Windows 8 before you connect the printer to your PC.

- 1) Start Windows® 8 operating system.

The following procedure is the same as 1.1. Installing the driver 2) to 7) of 1.Windows 7.

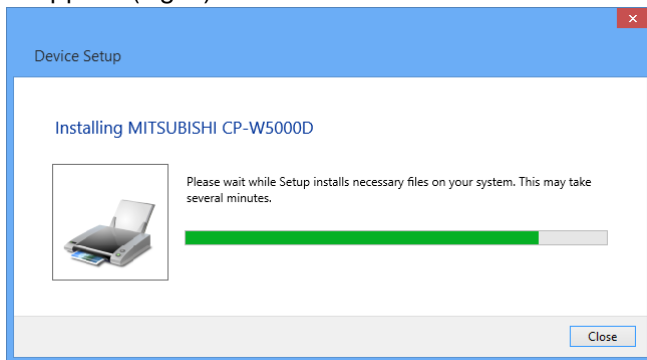
### 2.2. Installing the USB port

- 1) Now, power on the printer and connect it to your PC with USB cable.
- 2) The driver software will be automatically installed. Click the printer icon on the task bar to check the installation status. (Fig. 7)



<Fig. 7>

- 3) Progress screen of the installation is displayed. When the installation is complete, the screen will disappear. (Fig. 8)



<Fig. 8>

- 4) Icon of "MITSUBISHI CP-W5000D" will be added to the "Printers" in the "Devices and Printers".
- 5) Restart your PC.

## Uninstallation

Operate the following procedures to uninstall the printer driver.

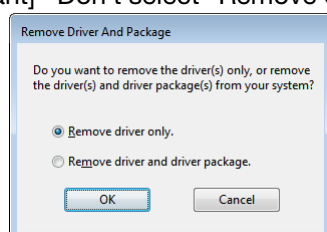
When uninstalling the printer driver, confirm that the printer driver is not used from the application or the print job does not remain in the spooler.

When you use the printer, confirm that the printer is not set as default printer.

When you uninstall and then reinstall the printer driver, restart your PC after the reinstallation is completed.

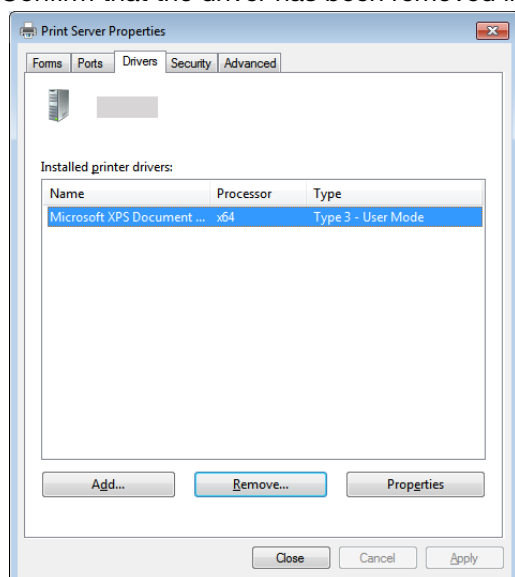
### Windows 7

- 1) Click Start button and select “Devices and Printers” from Start Menu.
- 2) Right-click the printer icon to be removed and select “Remove device”.
- 3) Click “Yes” button in the “Remove Device” confirmation dialog.
- 4) While selecting any of the icon under “Printers and Faxes” category in the “Devices and Printers” window, select “Print server properties” at the top of the window.
- 5) Open “Drivers” tab of “Print Server Properties” and click “Change Driver Settings” button.  
\* Depending on the version of the operating system, this window may not be displayed.
- 6) The similar window that doesn’t have “Change Driver Settings” button at the bottom left is displayed. Select the printer driver to be removed and click “Remove” button.
- 7) Select “Remove driver only.” in “Remove Driver And Package” dialog and click “OK” button. (Fig. 9)  
[Important] Don’t select “Remove driver and driver package”.



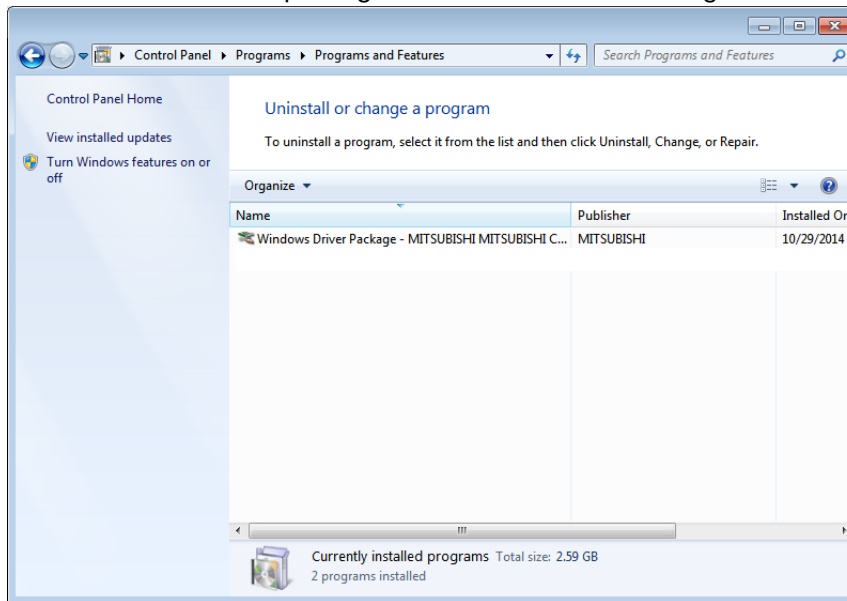
<Fig. 9>

- 8) Click “Yes” button in “Print Server Properties” confirmation dialog.
- 9) Confirm that the driver has been removed in “Print Server Properties”. (Fig. 10)



<Fig. 10>

- 10) Select "Programs and Features" on the "Control Panel".
  - 11) Select "Windows Driver Package –MITSUBISHI MITSUBISHI CP-W5000D" and click "Uninstall/Change" with right-click. (Fig. 11)
- Confirm that the driver package has been removed in "Programs and Features".



<Fig. 11>

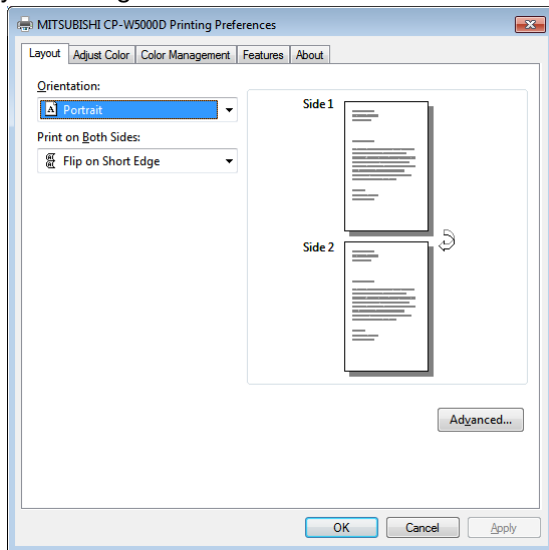
- 12) Disconnect the USB cable from your PC.
- 13) Restart your PC.

#### Windows 8

- \* When uninstalling the driver, make sure to connect the printer to the USB port on the PC that is used for the installation.
  - 1) Display "desktop" and press Windows "START" Key and "C" and display a charm. Then, click "Settings" and select "Control Panel" and select "Devices and Printers." "Devices and Printers" is displayed.
  - 2) Right-click the printer icon to be removed and select "Remove device".
  - 3) Click "Yes" button in the "Remove Device" confirmation dialog.
  - 4) While selecting any of the icon under "Printers" category in the "Devices and Printers" window, select "Print server properties" at the top of the window.

The following procedure is the same as 5) to 13) of Windows 7.

## 1. Layout dialog



<Fig. 12 Layout dialog (Windows 7)>

### 1) Orientation

The direction of paper is set.

### 2) Print on Both Sides

The print side and flip edge are set.

None : Single-sided print.

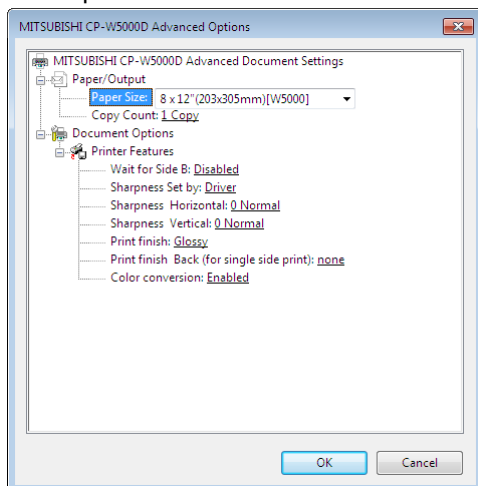
Flip on Long Edge : Flip on long edge on both-sided print.

Flip on short Edge: Flip on short edge on both-sided print.

### 3) Advanced

Open Advanced Options dialog.

## 2. Advanced Options



<Fig. 13 Advanced Options dialog (Windows 7)>

### 1) Paper Size

The size of paper is selected.

The number of print pixels for each paper size is shown in the table.

Paper size	Print dots
6 x 12" (152 x 305 mm) [W5000]	1864 x 3624
6 x 4" x 2 (152 x 102 mm x 2) [W5000]	1864 x 2484
6 x 4" x 3 (152 x 102 mm x 3) [W5000]	1864 x 3744
6 x 4" (152 x 102 mm) [W5000]	1864 x 1224
6 x 6" (152 x 152 mm) [W5000]	1864 x 1824
6.8 x 4.8" (173 x 122 mm) [W5000]	2104 x 1464
6.8 x 9.6" (173 x 244 mm) [W5000]	2104 x 2904
7 x 5" x 2 (178 x 127 mm x 2) [W5000]	2164 x 3084
7 x 5" (178 x 127 mm) [W5000]	2164 x 1524
8 x 10" (203 x 254 mm) [W5000]	2464 x 3024
8 x 11" (203 x 279 mm) [W5000]	2464 x 3324
8 x 11.7" (203 x 297 mm) [W5000]	2464 x 3534
8 x 12" (203 x 305 mm) [W5000]	2464 x 3624
8 x 4" x 2 (203 x 102 mm x 2) [W5000]	2464 x 2484
8 x 4" x 3 (203 x 102 mm x 3) [W5000]	2464 x 3744
8 x 4" (203 x 102 mm) [W5000]	2464 x 1224
8 x 6" x 2 (203 x 152 mm x 2) [W5000]	2464 x 3684
8 x 6" (203 x 152 mm) [W5000]	2464 x 1824
8 x 8" (203 x 203 mm) [W5000]	2464 x 2424

The print pixels vary depending on the setting of Paper Size.

### 2) Copy Count

The printer prints the number of printouts which is shown in dialog. (Range: 1 – 999)

Collated is enabled when copy count is set to 2 or more.

\* When multiple copies are printed without collated setting, the print sequence is sorted by pages as listed below.

(example) The print result of 2 copies of 3 pages: 1p 1p 2p 2p 3p 3p

\* When multiple copies are printed with collated setting, the print sequence is sorted by pages as listed below.

(example) The print result of 2 copies of 3 pages: 1p 2p 3p 1p 2p 3p.

### 3) Wait for Side B

In the case of odd number images, at the time of Both Sides, it is set whether or not to wait for data on the back side.

Disabled : Print out in blank page without waiting for back side data.

Enabled : Wait for back side data after last page printing.

\* Note When copy count is set to 2 or more, it is recommended that you set "Disabled".

\* Example of a both-sided printing below.

[1,2]: Both-sided printing of image 1 and image 2.

[3,X]: Both-sided printing of image 3 and blank page.

Examples of "Disabled"

example 1) 3 images, Copy count 2, collated

[1,2],[3,X],[1,2],[3,X]

example 2) 3 images, Copy count 2, no collated

[1,2],[1,2],[3,X],[3,X]

Examples of "Enabled"

example 3) 3 images, Copy count 2, collated

[1,2],[3,1],[2,3]

example 4) 3 images, Copy count 2, no collated

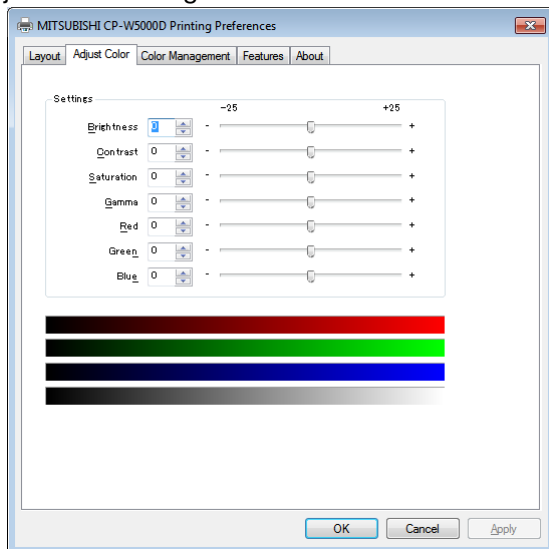
[1,2],[1,2],[3,3]

\* Even if you set "Enabled", it is printed out in blank page on the back (side B) after a lapse of a predetermined period of time.

- 4) Sharpness Set by  
Set sharpness mode by driver setting or setting by printer inside.  
Driver : Set sharpness parameter by driver.  
Printer : Set sharpness parameter by printer inside.
  
- 5) Sharpness Horizontal  
none/-3 Soft/-2/-1/0 Normal/1/2/3/4 Hard  
Level of outline correction is changed in the horizontal direction.  
none : Not perform the outline correction.  
-3 to 4 : The value is smaller, the outline becomes softer.  
          The value is larger, the outline becomes sharper.  
\* This setting works when "Sharpness Set by" is set for "Driver".
  
- 6) Sharpness Vertical  
none/-3 Soft/-2/-1/0 Normal/1/2/3/4 Hard  
Level of outline correction is changed in the vertical direction.  
none : Not perform the outline correction.  
-3 to 4 : The value is smaller, the outline becomes softer.  
          The value is larger, the outline becomes sharper.  
\* This setting works when "Sharpness Set by" is set for "Driver".
  
- 7) Print finish  
Set the print surface finish mode for both sides print and single print side surface.  
Glossy : Gloss finish  
Semi-glossy : Semi-gloss finish  
Matte : Matte finish  
[Notes]  
\* When both-sided printing, if you print the odd number images, the back (side B) of the last print (blank page) will have the same finish as side A.  
In both-sided printing, it is recommended that you print the even number images.  
\* When both-sided printing, if image data of the back (side B) is not sent within the time limit set by "TIME OUT", the back (side B) will be blank page and its finish is the same as side A.  
\* We can set "TIME OUT" by printer. For setting "TIME OUT" please refer "OPERATION MANUAL".  
  
[About "side A", "back (side B)"]  
side A : it will be printed on the inner surface of the paper roll.  
back (side B) : it will be printed on the outer surface of the paper roll.
  
- 8) Print finish Back (for single side print)  
Set the print finish mode for single print backside.  
Glossy : Gloss finish  
Semi-glossy : Semi-gloss finish  
Matte : Matte finish  
none : No surface finish
  
- 9) Color conversion  
Set whether or not to color conversion.  
Disabled : Color conversion is not performed.  
Enabled : Color conversion is performed.  
\* When the "ICM Method" is set "Driver" in "Color Management", color conversion is not performed.



### 3. Adjust Color dialog



<Fig. 14 Adjust Color dialog (Windows 7)>

#### 1) Brightness

Adjusted value (-25 - +25)

This is valid for the overall dark image and bright image.

When you want the brightness of the print picture to be dark, the value of “Brightness” of the color adjustment dialog must be decreased.

#### 2) Contrast

Adjusted value (-25 - +25)

When you want the contrast of the print picture to be strong, bright areas brighter, dark areas darker, the value of “Contrast” of the color adjustment dialog must be increased.

#### 3) Saturation

Adjusted value (-25 - +25)

When you want to get color intensity, the value of “Saturation” of the color adjustment dialog must be increased.

#### 4) Gamma

Adjusted value (-25 - +25)

When you want to increase the density of the middle tones, decrease the value of “Gamma” of the color adjustment dialog.

#### 5) Red

Adjusted value (-25 - +25)

As the value is smaller, the red tone is weakened.

As the value is larger, the red tone is intensified.

#### 6) Green

Adjusted value (-25 - +25)

As the value is smaller, the green tone is weakened.

As the value is larger, the green tone is intensified.

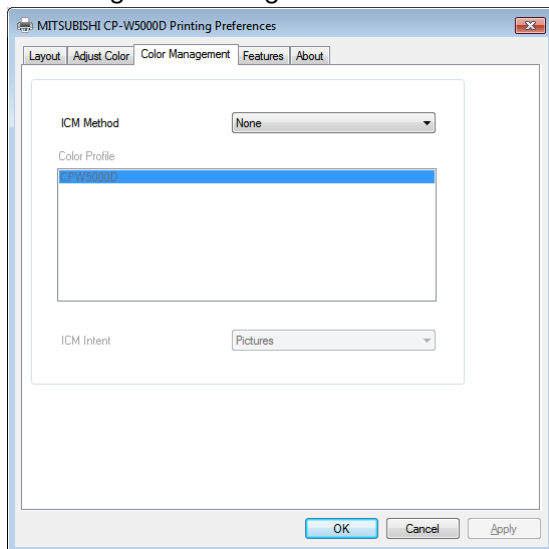
#### 7) Blue

Adjusted value (-25 - +25)

As the value is smaller, the blue tone is weakened.

As the value is larger, the blue tone is intensified.

#### 4. Color Management dialog



<Fig. 15 Color Management dialog (Windows 7)>

##### 1) ICM Method

Select ICM method.

**None** : Setting of “Color Management” by the system and the driver does not apply. However, if it is implemented the color management as a unique feature in the application, there is a case where the color is converted.

**Driver** : Printer driver is set to perform color management.

\* Profile file name set for “MITSUBISHI\_CPW5000.icm”.

**System**: Operating system is set to perform color management.

##### 2) Color Profile

Select color profile. (CPW5000D)

\* Profile file name to use: MITSUBISHI\_CPW5000.icm.

##### 3) ICM Intent

Select ICM Intent when set “Driver” in ICM Method.

**Match** : All colors that can be used in both of the output and the input color profile color profile matches. Color that does not exist only in the input color profile, will be converted to the closest color on the output profile.

**Proof** : Like the Match item, color only in the input profile does not exist, will be converted to the closest color on the output profile.

In addition, the color tone of the conversion destination to be to a reference, in order to change the conversion source of color to match with it, there is a possibility that unexpected changes appear in color.

**Pictures** : There is a color only in the input profile does not exist, if there is a need to match the range of colors that the output profile can be used, intended for color data all of the input, perform the scaling of the value of the data.

You color relationships in the data is maintained, but there may not be maintained for the color itself.

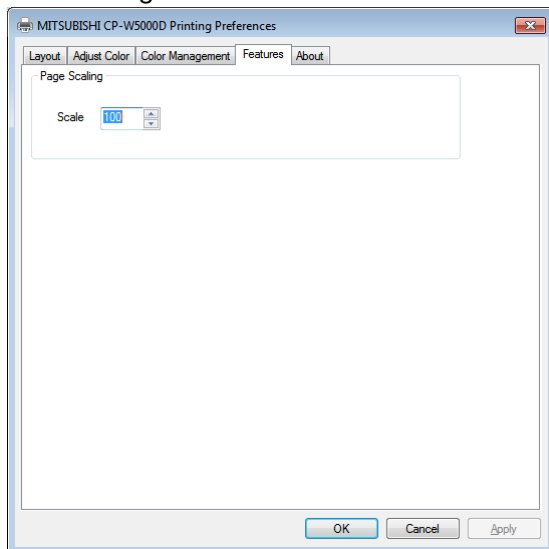
**Graphics** : The color saturation of the input data, as also is maintained after the output, perform the conversion.

To prioritize the maintenance of saturation, there is a possibility that the color is changed.

“Color Management” is carried out according to the ICC profile set in the “Color control” tab in printer properties. When the ICC profile is not set in the “Color control” tab, “Color Management” is not carried out.

If you want to use the set of “Driver” of “ICM Method”, please set the file name of the ICC profile “MITSUBISHI\_CPW5000.icm”. If the file name is different, “Color Management” of “Driver” setting does not work. For ICC profile, see “2. Making the ICC profile” in the “Operating directions for customer’s purpose.”

## 5. Features dialog

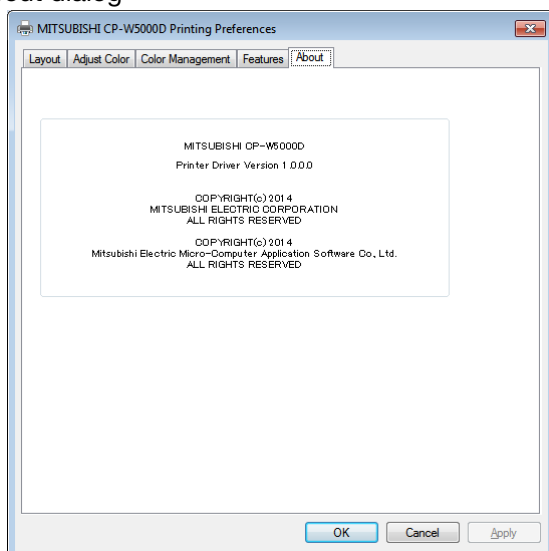


<Fig. 16 Features dialog (Windows 7)>

### 1) Scale

Set the scaling factor. (Range: 10 – 400)

## 6. About dialog



<Fig. 17 About dialog (Windows 7)>

Displays the version information of this driver.

## 7. Error indication

No.	Error dialog message	Button	Operation
1	Printer is not connected.	OK	Click OK button. After connecting the printer (Turn on the printer./ Connect the I/F cable), printing starts automatically.
2	Data Transmission Error.	OK	When clicking OK button, the dialog disappears and the print job is deleted. After turning the power off and turning it back on, start printing process again.
3	The printer does not respond.	OK	When clicking OK button, the dialog disappears and the print job is deleted. After turning the power off and turning it back on, start printing process again.
4	Something is wrong with the printer. (xxxx)	Cancel	When the error is resolved, the dialog disappears and printing starts automatically. When Cancel button is clicked, printing is canceled. All the jobs in the printer are cancelled and printing is cancelled. * Numeric characters are indicated in (XXXX).
5	Paper size of printer driver and ink ribbon type do not match.		
6	Ink Ribbon Empty (xxxx)		
7	Ink Ribbon End (xxxx)		
8	Ink Ribbon Error (xxxx)		
9	Front Cover Bin is not detected. (xxxx)		
10	Paper Empty (xxxx)		
11	Top Cover is Open (xxxx)		
12	Slide Door is Open (xxxx)		
13	Cleaning Roller Cover is not detected. (xxxx)		
14	Paper End (xxxx)		
15	Paper remaining (xxxx)		
16	Paper JAM (xxxx)		
17	Mechanical Error (xxxx)		
18	Fan Lock Error (xxxx)		
19	Thermal Print Head temperature is too high. (xxxx)		
20	Thermal Print Head temperature is too low. (xxxx)		
21	Operating temperature is too high. (xxxx)		
22	Operating temperature is too low. (xxxx)		
23	Operating humidity is too high. (xxxx)		
24	Sensor Error (xxxx)		
25	EEPROM Error (xxxx)		
26	LCD Access Error (xxxx)		
27	FLASH Access Error (xxxx)		
28	MDA Error		
29	Power voltage Error (xxxx)		
30	Transponder Access Error (xxxx)		
31	Printer driver settings is incorrect.		
32	Transfer image size is out of range.		
33	Printer is in menu mode.		
34	Preheat Error (xxxx)		
35	Thermal Protect Error (xxxx)		
36	Printer data transfer Error (xxxx)		
37	Humidity sensor Error (xxxx)		
38	Waste remaining (xxxx)		

\* When no error message is displayed on the monitor and printing is not carried out, check the indicators on the front of the printer.

\* When an error occurs in the printer, printing starts automatically by resolving the error.

For the details of the indicators on the printer, see the operation manual of CP-W5000DW series printer. The error may not be displayed in the case of system configurations other than that shown below.

Interface	Operating system	Setting
USB	Windows® 7	Set "Enable bidirectional support" for printer properties.
	Windows® 8	

\* The print job is not deleted if the printer is not turned on or the I/F cable is not connected. By turning on the printer or connecting the I/F cable, the data will be transferred again.

- 1) Secure of Hard disk for spool file  
Secure the capacity of Hard disk for spool file enough for the printer operation and the number of printing sheets.  
The printing cannot be correctly carried out when the capacity is running short.  
The drive for spool file is the same drive as the drive of Windows system usually.
- 2) Operation of the printer  
Refer to the operation manual of the printer.  
Do not turn off the power switch during data transfer or print.  
If you turn off the power switch, restarting of a PC may be needed.  
(When deletion of a printing data cannot be performed, restarting of a PC is required.)
- 3) Applicability of color adjustment  
The color adjustment is applied to the entire printing range including the background.
- 4) About "Print directly to the printer"  
This printer driver is created in XPSDrv format, the driver of the constraints of XPSDrv format, it does not support the setting of "Print directly to the printer."  
In Windows 7 you have this option enabled, but please do not use.  
In Windows 8 and later, this option is disabled, for XPSDrv format of drivers in order to avoid the wrong operation.
- 5) About connection of a PC and a printer  
Do not disconnect the interface cable during data transfer.  
If the interface cable is disconnected, wait 1 minute or more after disconnecting the cable to connect it again. If the cable is connected without leaving an enough interval, the printer driver may not work correctly.
- 6) System requirements for USB interface  
Use a PC with Windows 7 or Windows 8 pre-installed, and make sure that its USB operation is guaranteed by the manufacturer.  
CP-W5000 series printer supports USB 2.0 (Hi-Speed USB) interface. As USB 2.0 is fully upward compatible with USB 1.1, CP-W5000 series printer can be used with a PC that supports USB 1.1 interface.  
To use CP-W5000 series printer based on USB 2.0 (Hi-Speed USB), connect with a PC that supports USB 2.0 (Hi-Speed USB). For USB 2.0 (Hi-Speed USB) compatibility of your PC, contact the manufacturer of the PC.
- 7) Connection of USB cable  
When you take out and insert a USB cable after installation of a printer driver, wait 10 seconds or more after extracting a cable.  
If the cable is reinserted without leaving an interval, the printer may not operate normally.
- 8) Print job  
Do not delete the print job in the spooler during data transfer. When deleting it, do not start printing until the printer becomes to the initial status.
- 9) Copy count of prints  
With some applications, the copy count of prints set by the printer driver does not work. Set the number of prints from the print dialog box of the application.
- 10) Connection with more than one printer  
When multiple CP-W5000 series printers are connected to one PC, the "Add New Hardware Wizard" will be displayed and installation of the printer drivers will be carried out repeatedly for each connected printers. The same number of printer drivers as that of connected printers are installed.
- 11) Errors during printing  
When an error occurs during printing, it may not be displayed on the monitor. To resume printing, check the indicator on the front of the printer and take the countermeasure. For the indication by the indicator of the printer and the countermeasures, see the operation manual of the printer.

- 12) Setting of the color management  
Even if the color management is set by the printer driver, color Management may not be available with some applications.  
With some applications, color management is effective even if it is not set.
- 13) When you print and "Parameter's value is invalid." is displayed, perform the following operations.  
a) Select "Device Manager" from "Hardware" tab of "System Properties."  
b) Select "Scan for hardware changes."
- 14) Connection printer to PC  
After you install the printer driver, connect the printer and PC.
- 15) You can set the number of printouts from 1 to 999 in Advanced options dialog, however, the maximum number of printouts per one paper roll varies depending on the paper size.
- 16) Uninstallation and reinstallation of the printer driver  
Confirm that the printer is not set as default printer and then uninstall the printer driver.  
When you uninstall and then reinstall the printer driver, restart the PC after the reinstallation is completed.
- 17) This driver is suitable for printing from WPF (Windows Presentation Foundation) application. It is recommended that you use the WPF application.
- 18) Page Scaling settings are not reflected in the preview.  
There are applications that do not load the scaling setting value that is set by the driver, in this case, applications operate in the application settings even if you change the settings of the driver.
- 19) When passing the image data from the application to the driver, the driver may divide the data.  
In some applications, the portion corresponding to the division may become white lines, and the lines may be emphasized during the scaling process in some cases.
- 20) In Windows Photo Viewer, the scaling operates by the scaling setting of the applications. The scaling setting by the driver won't work with Windows Photo Viewer.
- 21) Due to constraints of some applications, the list of "ICM Intent" in "Color Management" dialog may be blank.  
When selecting "Driver" in "ICM Method", if "ICM Intent" is blank, "ICM Intent" works with the settings you set before.
- 22) In Adobe Photoshop, depending on the paper size, you may get the warning that your image is larger than the printable area of the paper.  
If you get a warning that your image is larger than the printable area of the paper, click Cancel, choose File > Print, and select the Scale To Fit Media box. To make changes to your paper size and layout, click Print Settings, and attempt to print the file again.
- 23) Copy Count is not displayed on the screen of the driver.  
Can be set by the number of copies setting in the Print dialog of the application.
- 24) When "Enabled" is selected in "Wait for Side B"  
When both-sided printing in an odd number image job, if transfer interval between the present job and the following job is short, the last image of the present job may be printed on the front (side A) and the first image of the following job may be printed on the back (side B).  
In an odd number image job, if the transfer interval is short, such as when you print while holding multiple jobs in the spooler, it is recommended that you set "Disabled".  
Also, when both-sided printing, it is recommended that you print the even number images.
- Example) The printing result in an odd number image job  
Job 1: image 1-①, 1-②, 1-③, "Enabled" is selected in "Wait for Side B"  
Job 2: image 2-①, 2-②, 2-③  
If the Job 1 and the Job 2 are in the spooler, it may be printed on both sides as follows.  
[1-①, 1-②], [1-③, 2-①], [2-②, 2-③]  
\* [1-①, 1-②] means that image 1-① and image 1-② are printed on the both sides of a paper.

- 25) When both-sided printing, if you print the odd number images, the back (side B) of the last print (blank page) will have the same finish as side A.  
In both-sided printing, it is recommended that you print the even number images.  
When both-sided printing, if image data of the back (side B) is not sent within the time limit set by "TIME OUT", the back (side B) will be blank page and its finish is the same as side A.  
\* We can set "TIME OUT" by printer. For setting "TIME OUT" please refer "OPERATION MANUAL".
- 26) In Windows Photo Viewer, if a large amount of image data is transferred in the condition of setting color management, the printing may not be performed properly.

## Operating directions for customer's purpose

1. When you want to adjust the color of the print image.  
(Note that the effects are invalid on the display even if you make following setting.)
  - 1) When you want the density of entire print picture to be thick (dark), decrease the value of "Brightness" of the color adjustment dialog.
  - 2) When the print picture is out of focus (the contrast is weak), increase the value of "Contrast" of the color adjustment dialog.  
The contrast becomes stronger.
  - 3) When you want to change the color of printout.  
Increase Red : Increase the "R" value of the color adjustment dialog.  
Increase Green: Increase the "G" value of the color adjustment dialog.  
Increase Blue : Increase the "B" value of the color adjustment dialog.
2. Making the ICC profile  
Refer to the following when you make a suitable ICC profile for the system to be used and apply it to the printer driver.
  - 1) Set the printer driver as follows when you print the basic color chart for making ICC profile using the printer.  
Delete the ICC profile set on the "Color control" tab of the printer property.  
Set the "ICM Method" on "Color Management" dialog of the printer driver to "None".  
Set the "Color conversion" on the "Advanced Options" dialog of the printer driver to "none".
  - 2) Add the new ICC profile using the "Color control" tab of the printer property.

## Prohibition matter

We prohibit Reverse Engineering, decompiling or reverse assembling of this driver software.

## Exemption from responsibility

Occasionally, this software does not operate normally depending on operating environment.  
Moreover, Mitsubishi Electric Co. will not assume any responsibility for damage (including, but not limited to, lost profit or damage caused from special circumstances etc.) occurring during the use of this driver.