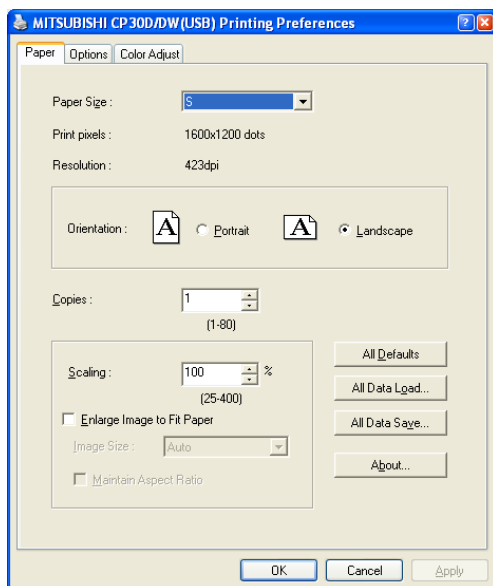


Function explanation

1. Paper dialog



<Fig.11 The dialog of "Paper">

1) Paper Size

The size of paper is selected.

The number of print pixels for each paper size is shown in the right table.

2) Print pixels

The number of pixels to print in each paper size is displayed.

3) Resolution

The resolution is displayed.

4) Orientation

The direction of paper is set.

5) Copies

The printer prints the number of printouts which is shown in dialog. (Range : 1 - 80)

*When multiple copies are printed, it becomes like the example below usually.

(example) The print result of 2 copies of 3 pages:1p 1p 2p 2p 3p 3p

*Some applications might not transmit as the above method.

(example)The print result of 2 copies of 3 pages

:To achieve 1p 2p 3p 1p 2p 3p, the application outputs each image twice.

6) Scaling

Enlargement scale is set. (Range : 25-400%)

7) Enlarge Image to Fit Paper

Data of the selected image size is enlarged to fit the paper size.

8) Image Size

Auto / 640x480 / 800x600 / 1024x768

Select the image size to enlarge the image to fit the paper.

When Auto is selected, the printer driver automatically obtains and sets the size of the image made by application software.

9) Maintain Aspect Ratio

The aspect ratio of image data is kept.

When OFF is selected, the image is printed in the entire print area.

10)All Defaults

All the settings on the Paper, Options and Color Adjust tabs are reset to the defaults.

11)All Data Load

When clicked, the setting file is loaded.

12)All Data Save

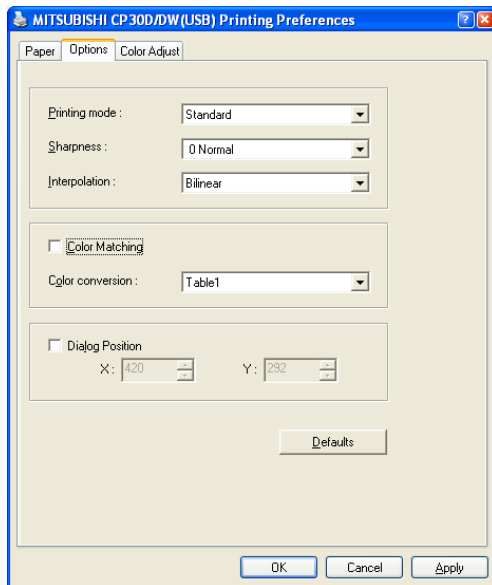
All the settings on the Paper, Options and Color Adjust are saved in the setting file.

13)About...

Displays the version information of this driver.

Paper size	Print pixel
S	1600*1200
L	2100*1600
Auto	The size of ink ribbon loaded in the printer is automatically selected.

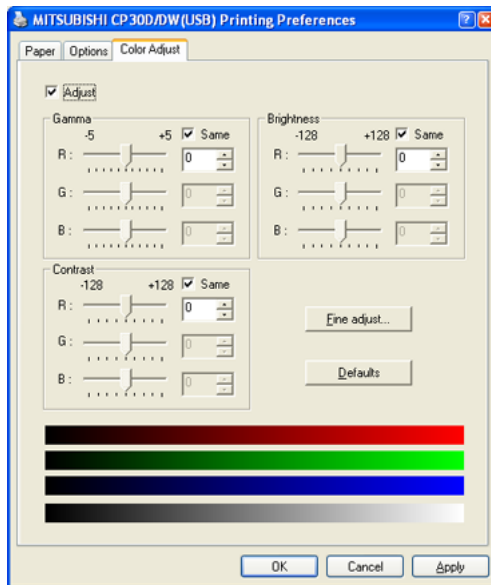
2. Option setting dialog



<Fig.12 Option setting dialog>

- 1) Printing mode
Standard / Power save
Printing mode can be changed.
Standard :High-speed and high-quality printing
Power save :Low power consumption printing
- 2) Sharpness
none / -3 / -2 / -1 / 0 / 1 / 2 / 3
Level of outline correction is changed.
none :Not perform the outline correction.
-3 to 3 :The value is smaller, the outline becomes softer.
The value is larger, the outline becomes sharper.
- 3) Interpolation
Nearestneighbor / Bilinear / Bicubic
When a value more than 100% is set in Scaling, the selected interpolation is carried out.
- 4) Color matching
Color matching is carried out according to the ICC profile set in the “Color control” tab.
When the ICC profile is not set in the “Color control” tab, set the “Color matching” to OFF because the color matching is not carried out in this case.
- 5) Color conversion
none / Table1 / External table
none :Color conversion is not performed.
Table1 :Color conversion is performed.
External table :Color conversion is performed by using the external table supplied with the printer driver.
- 6) Dialog Position
The position to display the message dialog box can be set.
- 7) X/Y coordinates (X/Y)
When Dialog Position setting is enabled, you can enter coordinates. With this setting, enter the coordinates of the upper-left position of the message dialog box.
- 8) Defaults
All the settings in Option dialog are reset to the defaults.

3. Color adjustment



<Fig. 13 Color adjustment dialog>

3.1. Color Adjust dialog

1) Adjust

Tick the box for the color adjustment.

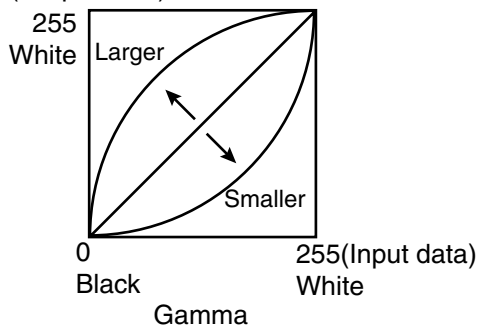
2) Gamma

Adjusted value(-5 - +5)

When you want to increase the density of the middle tones, decrease the value of "Gamma" on the color adjustment dialog.

Same check box ON:R,G and B are same value, OFF:R,G and B are individually adjusted.

(Output data)



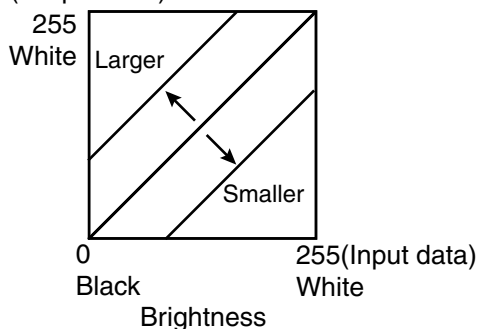
3) Brightness

Adjusted value (-128-+128)

When you want the brightness of the print picture to be dark, the value of "Brightness" of the color adjustment dialog must be decreased.

Same check box ON:R,G and B are same value, OFF:R,G and B are individually adjusted.

(Output data)

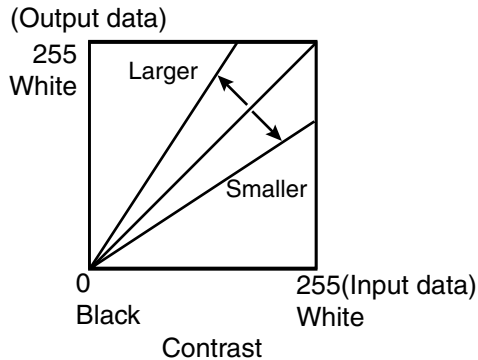


4) Contrast

Adjusted value (-128-+128)

When you want the contrast of the print picture to be strong, the value of "Contrast" of the color adjustment dialog must be increased.

Same check box ON: R,G and B are same value, OFF: R,G and B are individually adjusted.



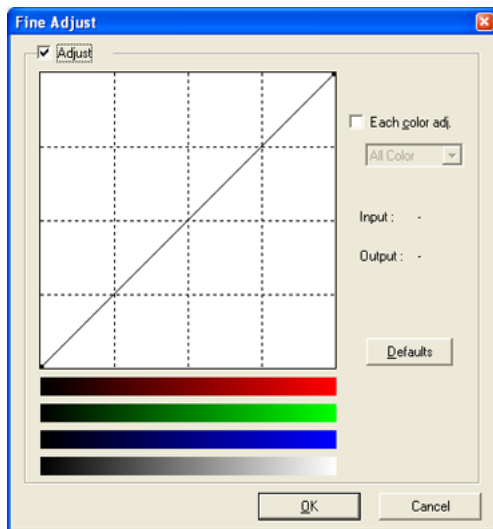
5) Fine adjust

The more minute color adjustments are carried out by the Gamma adjustment tone curve.

6) Defaults

All adjustable values in Color Adjust dialog become 0.

3.2. Fine Adjust dialog



<Fig.14 Fine Adjust dialog>

1) Adjust

Tick the box for the color adjustment.

2) Each color adjustment

ON: Each RGB color is individually adjusted.

OFF: The same adjustment of each RGB color carries out.

3) Selecting the color to be adjusted

When adjusting color individually, select the color to be adjusted.

4) I/O value display

The input (gradation value before adjustment) and output (gradation value after adjustment) of the adjustment point are displayed.

5) Defaults

All the tone curves become a linear straight line of the range (0, 0) - (255, 255).

4. Error indication

No.	Operation	Button	Operation
(1)	Printer is not connected.	OK	Click OK button. After connecting the printer (Turn on the printer./ Connect the I/F cable), printing starts automatically.
(2)	The Printer does not respond. Turn off the printer and then back on.	OK	When clicking OK button, the dialog disappears and the print job is deleted. After turning the power off and turning it back on, start printing process again.
(3)	The ribbon cartridge is not loaded.	Cancel	When the error is resolved, the dialog disappears and printing starts automatically. When Cancel button is clicked, printing is canceled.
(4)	Paper has run out.		
(5)	The paper cassette is not loaded.		
(6)	Remove paper from the print outlet.		
(7)	Wrong type of ribbon cartridge.		
(8)	Access cover is open.		
(9)	Ink ribbon has run out.		
(10)	Wrong size of paper type.		
(11)	Wrong combination of ink ribbon and paper size set by the printer driver.		
(12)	Flap is open.		
(13)	Mechanical Error. Remove the ribbon cartridge.		
(14)	Remove the paper cassette, check the paper.		
(15)	Paper jam. Remove the paper with the jam-paper release dial.		
(16)	Paper jam. Turn off the printer and then back on.	OK Cancel	Click OK button. After turning the power off, resolve the error. When the power is turned on, printing starts automatically. When Cancel button is clicked, printing is canceled.
(17)	Access cover is open. Close the cover, and turn off the printer and then back on.		
(18)	Flap is open. Turn off the printer and then back on.		
(19)	Back-cover is open. Turn off the printer, close the back-cover.		
(20)	Mechanical Error. Turn off the printer and then back on.		
(21)	Printer error. Turn off the printer and then back on.		

When no error message is displayed on the monitor and printing is not carried out, check the indicators on the front of the printer.

When an error occurs in the printer, printing starts automatically by resolving the error.

For the indicator on the printer, see the operation manual of CP30DW.

The error may not be displayed in the case of system configurations other than that shown below.

Interface	Operating system	Setting
USB	Windows2000	Set "Enable bi-directional support for this printer" for printer properties.
	WindowsXP	

The print job is not deleted if the printer is not turned on or the I/F cable is not connected. By turning on the printer or connecting the I/F cable, the data will be transferred again.

- 1) Secure of Hard disk for spool file
Secure the capacity of Hard disk for spool file enough for the printer operation and the number of printing sheets.
The printing cannot be correctly carried out when the capacity is running short.
The drive for spool file is the same drive as the drive of Windows system usually.
- 2) Operation of the printer
Refer to the operation manual of the printer.
Do not turn off the power switch during data transfer or print.
If you turn off the power switch, restarting of a computer may be needed.
When deletion of a printing data cannot be performed, restarting of a computer is required.
- 3) Applicability of color adjustment
The color adjustment is applied the entire printing range including the background.
- 4) About "Print directly to the printer"
With some applications, if "Print directly to the printer" is selected, objects may not be printed correctly.
In that case, select "Spool print documents ..." for printing.
CPD30X : the "details" page of CPD30X's printer property sheet
- 5) About connection of a computer and a printer
Do not disconnect the interface cable during data transfer.
If the interface cable is disconnected, connect it after the DATA indicator on the printer stops blinking. If the cable is connected before the DATA indicator stops blinking, the printer driver may not work correctly.
- 6) System requirements for USB interface
Use the computers equipped with USB interface listed below.
Computers pre-installed with Windows2000/XP.
Computers installed with Windows2000/XP that are USB-guaranteed by the manufacturer.
CP30DW supports the USB 2.0 (Hi-Speed USB) interface.
As USB 2.0 is completely upwardly compatible with USB 1.1, CP30DW can be connected with a personal computer on which USB1.1 interface is available.
When you use CP30DW with USB 2.0 (Hi-Speed USB), the personal computer has to support USB 2.0 (Hi-Speed USB).
For the compatibility of the personal computer with USB 2.0 (Hi-Speed USB), ask the manufacturer of the personal computer.
- 7) Connection of USB cable
When you take out and insert a USB cable after installation of a printer driver, wait 10 seconds or more after extracting a cable.
If the cable is reinserted without leaving an interval, the printer may not operate normally.
- 8) Print job
Do not delete the print job in the spooler during data transfer. When deleting it, do not start printing until the printer becomes to the initial status.
- 9) Number of prints
With some applications, the number of prints set by the printer driver does not work. Set the number of prints from the print dialog box of the application.
- 10) Connection with more than one printer
When more than one CP30DW is connected to one personal computer, the "Add New Hardware Wizard" will be displayed and installation of printer drivers will be carried out repeatedly for each of connected printers.
The same number of printer drivers as that of connected printers are installed.
- 11) Errors during printing
When an error occurs during printing, it may not be displayed on the monitor. To resume printing, check the indicator on the front of the printer and take the countermeasure. For the indication by the indicator of the printer and the countermeasures, see the operation manual of the printer.

- 12) When you print and it is displayed as "Parameter's value is invalid.", perform the following operations.
- Select "Device Manager" from "Hardware" tab of "System Properties."
 - Select "Scan for hardware changes."
- 13) Interpolation
- In the following cases, the image is enlarged by the interpolation method selected on the Options tab.
- A value more than 100% is set in Scaling.
 - The image is enlarged to fit the paper size.
- The default setting is "Bilinear."
- For high-speed processing, select "Nearestneighbor."
- For high-quality printing, select "Bicubic."
- When 100% or a smaller value is set, interpolation isn't carried out.
- 14) Dialog Position
- Even though more than one monitor is connected, the position of the message dialog box can be changed within the main monitor area only.
- 15) Printing mode
- Depending on the setting pattern of the DIP switches of the printer, the printing mode may not be when the printing mode setting is changed via the printer driver.
- For setting of the DIP switches of the printer, see CP30DW user's guide.
- 16) When you select "Auto" in "Paper size"
- When an ink ribbon is not loaded in the printer at the start of printing, printing may not be carried out correctly. Make sure that a proper ink ribbon is loaded in the printer before starting printing.
- When the image size is larger than "L", the printed image is cut off.
- 17) When you select "Auto" in "Image Size"
- The printer driver may not be able to obtain the size of image made by some applications.
- When the image size can not be obtained, the image is not enlarged according to the paper size.
- 18) Setting of "Maintain Aspect Ratio"
- When you print an image by enlarging to fit the paper size, the image may be printed smaller than the print area in case of selecting "ON" in "Maintain Aspect Ratio".
- When you want to print the image in the entire print area, set "Maintain Aspect Ratio" to "OFF".
- 19) Color profile for color matching
- Color profile is not supplied with the printer driver.
- When you carry out color matching, manually add a color profile you made from the "Color Adjust" tab of the printer property.
- When you print out a color chart to make a color profile, set the "Color conversion" on the option tab of the printer driver to "none".
- 20) Setting of the color matching
- Even if the color matching is set to ON by the printer driver, color matching may not be available with some applications.
- With some applications, color matching is effective even if it is set to OFF.
- 21) When you use Photoshop
- When the resolution of the image data is different from that of the printer (423 dpi), the image may not be printed on the correct position. In this case, resize the image to fit printer resolution.

Operating directions for customer's purpose

When you want to adjust the color of the print image.

Note that the effects are invalid on the display if you make following setting.

- 1) When you want the density of entire print picture to be thick (dark), decrease the value of "Brightness" of the color adjustment dialog.
- 2) When the focus of the print picture is loose (The contrast is weak), increase the value of "Contrast" of the color adjustment dialog.
The contrast becomes stronger.
- 3) When you want to change the color of printout.
Change the value of "Brightness".
Increase Red : Increase the "R" value of the color adjustment dialog.
Increase Green : Increase the "G" value of the color adjustment dialog.
Increase Blue : Increase the "B" value of the color adjustment dialog.
- 4) When you want to adjust Gamma of the printout.
By moving the graph of the Gamma adjustment dialog with mouse, The density of the entire image can be adjusted to the arbitrary Gamma curve.
The density becomes high (dark) when decrease the output value compare with the input value.
The density becomes low (bright) when enlarging the output value compare with the input value.

Prohibition matter

We prohibit Reverse Engineering, decompiling or reverse assembling of this driver software.

Exemption from responsibility

Occasionally, this software does not operate normally depending on operating environment.

Moreover, Mitsubishi Electric Co. will not assume any responsibility for damage (including, but not limited to, lost profit or damage caused from special circumstances etc.) occurring during the use of this driver.