

[MAC OS X 10.5/10.6 Printer Driver Installation procedure]

This is to explain how to install **MAC OS X 10.5/10.6** printer driver for Mitsubishi digital color printer.

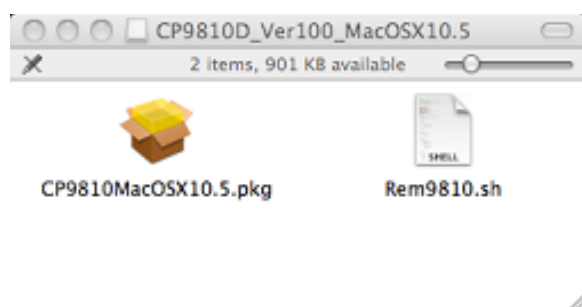
*Here, I have indicated only the installation method of a driver. Please read a printer driver guide about the details about use of a driver.

[Installation]

Administrator authority is required to install this printer driver.

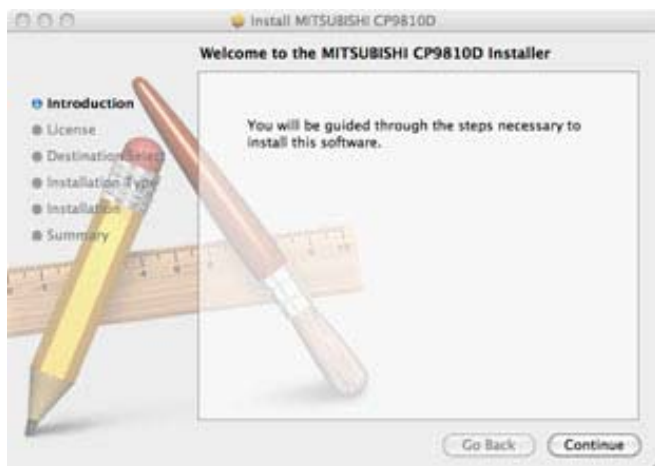
When the printer driver of older version has been installed, uninstall it before installing this driver.

- 1) Start your Macintosh.
- 2) Double-click on “CP9810MacOSX10.5.pkg” of the folder.(Fig.1)

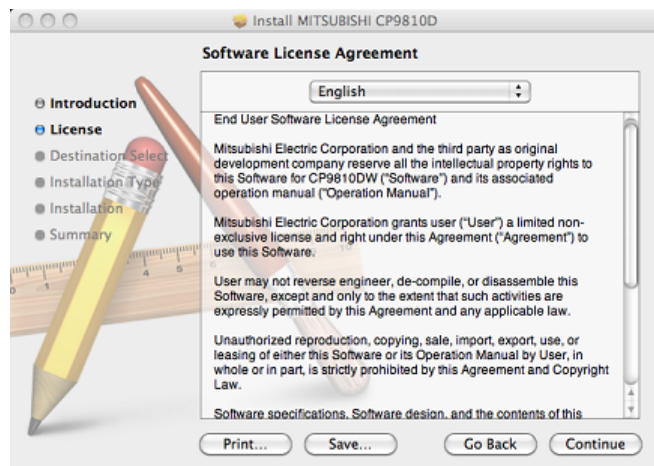


<Fig.1>

- 3) Click “Continue” button in the “Install MITSUBISHI CP9810D”. (Fig.2)
- 4) Read the Software License Agreement and click “Continue” button. (Fig.3)



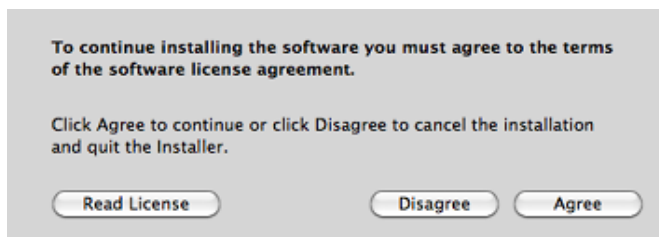
<Fig.2>



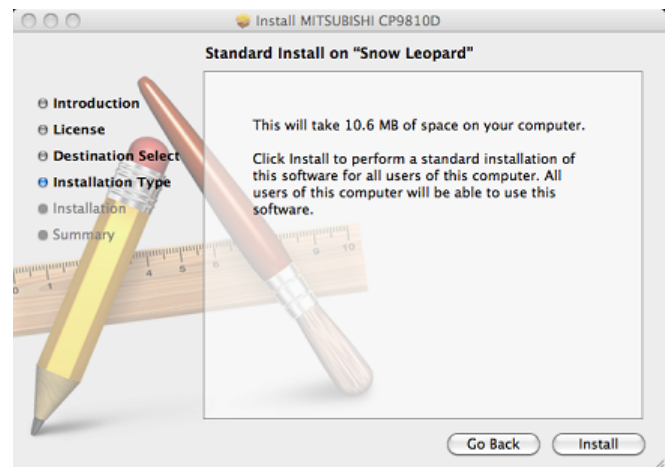
<Fig.3>

5) When you agree with the terms and conditions of the Agreement, click “Agree”. (Fig.4)

6) Click “Install” button.(Fig.5)

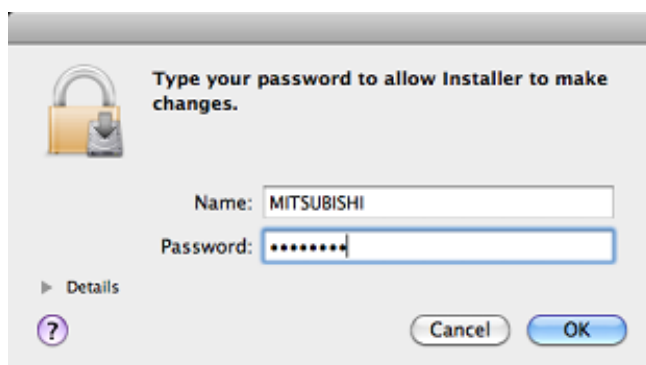


<Fig.4>



<Fig5>

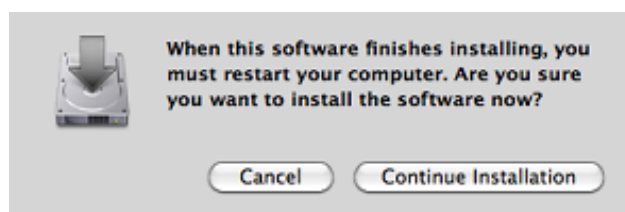
7) Enter a name and password, and click “OK” button. (Fig.6)



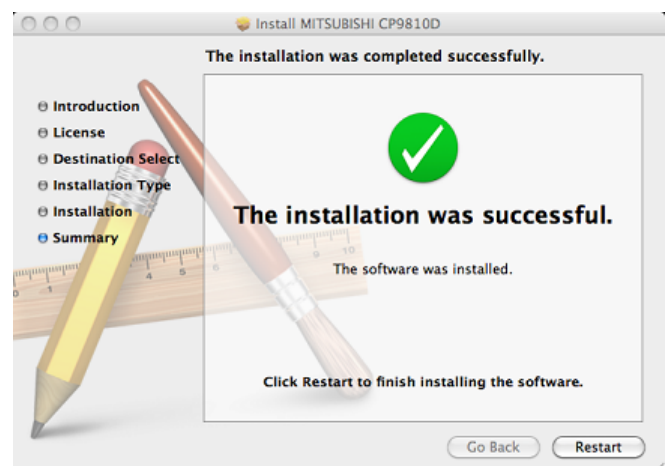
<Fig6>

8) Click “Continue Installation”. (Fig.7)

9)Click “Restart” to restart the personal computer. (Fig.8)



<Fig.7>

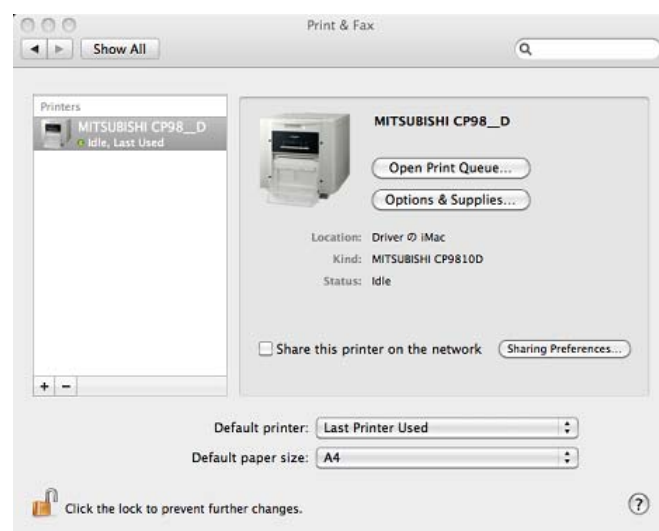


<Fig.8>

- 10) Turn on the printer and connect it with the personal computer.
 - 11) Click "System Preferences" icon, and "System Preferences screen" is displayed.(Fig. 9)
 - 12) Click "Print & Fax" on "System Preferences screen".
- The installed printer is automatically added to a "Printers". (Fig. 10)
- *This printer is added in the name of "MITSUBISHI CP98_D".



<Fig9>



<Fig10>

[Notes]

1) Although it may become a display while the state of a printer is standing by when the power supply of a printer has not been ON or USB cable connected, it does not have influence on future print operation.

2) In the case of MacOSX 10.6, if an error is not canceled but the job of an error is deleted when an error occurs, even if it cancels an error after that, the error display of a print queue may not be canceled.

In this case, a error display will be canceled, once it deletes a printer from a printer list and adds a printer again.

[Prohibition matter]

We prohibit Reverse Engineering, decompiling or reverse assembling of this driver software.

[Exemption from responsibility]

Occasionally, this software does not operate normally depending on operating environment. Moreover, Mitsubishi Electric Co. will not assume any responsibility for damage (including, but not limited to, lost profit or damage caused from special circumstances etc.) occurring during the use of this driver.