

# Introduction of new media for CP-W5000 CK5000 HG / PK5812 HG

## Introduction

Mitsubishi Electric is introducing a new media for the CP-W5000 duplex printer from July 2021. The new HG media offers a better picture quality with a more detailed and contrasted images.

The new media will be available as soon as the stock of old media is finished.

The new one (HG) will replace the old one and therefore, current one will be discontinued.

- CK5000 will be replaced by CK5000 HG
- PK5812 will be replaced by PK5812 HG

In order to get the maximum benefits that the new media offers, we strongly recommend following the instructions given in this document to update your printer and printing system.

## New Media: Scope and Indications

### 1. Systems compatibility

Additionally to printer update, the system connected to a CP-W5000 will need to be updated in order to include the corresponding ICC information and get the best picture quality with the new condition. The updates which are explained in this document to use HG media for CP-W5000 are valid for:

System	Actions to upgrade
Win driver	- Apply new LUT in CP-W5000 with LUT downloader supplied - Apply new ICC in driver settings
Mac driver	- Apply new LUT in CP-W5000 by LUT downloader supplied (This process needs to be done on a Windows PC connected to the CP-W5000, once finished the printer can be connected back to its original equipment) - Apply new ICC in Mac driver settings
CLICKxxx KIOSKxxx MKG8xxx	- Apply new LUT in CP-W5000 with LUT downloader supplied (This process needs to be done on a Windows PC connected to the CP-W5000, once finished the printer can be connected back to its original equipment) - Apply new ICC in printmodule settings

## 2. Media indications

- . - Name CK5000 HG / PK5812 HG
- . - PK5812 HG -> # of printed Duplex sheets per spool: 120 sheets  
Each roll of ribbon will contain 250 Picture Units but only 240 units will be utilized

Please make sure your complete system is working with the correct combination of media and system settings following the below table. These are the only combinations recommended by Mitsubishi Electric.

Printing system	Paper Code	Ribbon Code	Printer LUT	ICC/CDP	Comments
Driver	4658	6305/18A1(Hex)	SLTAX270	W5000_A4_Q2_CL_2016-04-28.icc	Currently in the market driver
Driver	5658	9305/2459(Hex)	SLTA7180	CPW5000DW_HG.icc	Correct combination for HG media
printmodule	4658	6305/18A1(Hex)	SLTAX270	W5000_A4_Q2_CL_2016-04-28.icc W5000_A4_Q2_CL_2016-04-27.cpd	Currently in the market systems
printmodule	5658	9305/2459(Hex)	SLTA7180	CPW5000DW_HG.icc	Correct combination for HG media



### Warning sheet

In order to prevent customers from loading incorrect media, HG media is including a warning sheet inside each box of paper CK5000(HG) and inside each box of ink ribbon PK5812(HG). This warning sheet gives a brief explanation of how to proceed when using this new media.

#### Information

This (HG) Type of media is a new generation, higher grade of media for the Mitsubishi Color Printer CP-W5000DW series. Before using this new HG media with your CP-W5000DW, go to the following web site, download and update your printer with the printer firmware / ICC Profile.

<http://www.mitsubishielectric.com/products/vis/index.html>

Printer - Photo Printers : printer driver download

When you replace your media with new HG type, please be sure to change both paper and donor ink ribbon at the same time.

## How to update: Method and tools

1. What do you need:
  - a) LUT downloader to update your printer with the correct LUT:  
*DLCPW5000LUT\_Ver100.exe*
  - b) ICC profile to apply on your system/PC:  
*CPW5000DW\_HG.icc*
  - c) Printer Update and ICC profile installation instructions:  
*LUT update and ICC Profile Installation for HG media.pdf*
  - d) LUT downloader instructions of use:  
*PrinterUpdateToolCPW5000DW\_EN\_20210405.pdf*

### 2. Preparation

1	You must be logged in as an administrator on the PC to be installed the LUT downloader.
2	<p>The driver's URL: The driver for CP-W5000DW must be already installed on the PC. If not, download it from here: <a href="https://www.mitsubishielectric.co.jp/ldg/ja/visual/products/printer/photo/download_01_english.html">https://www.mitsubishielectric.co.jp/ldg/ja/visual/products/printer/photo/download_01_english.html</a></p>
3	<p>Download all files from the same url above You can find them from scrolling down the page in the following location. "FIRMWARE/ICC PROFILE DOWNLOAD(Ver.English)" -&gt; "Firmware/ICC Profile"</p> <p>The file structure is:</p> <ul style="list-style-type: none"> <li>CPW5000_Tool_LUTDLV100_ICCforHG</li> <li>CPW5000DW_HG.icc</li> <li>LUT update and ICC Profile Installation for HG media.pdf</li> <li>PrinterUpdateToolCPW5000DW_EN_20210405.pdf</li> <li>CPW5000_Tool_LUTDLV100_20210408.zip</li> <li>DLCPW5000LUT_Ver100.exe</li> <li>MUsbXplf.dll</li> </ul> <p>Note: remember that the downloader can only be used on Windows PC</p>

### 3. LUT update

This HG media has different characteristics than previous one. For this reason, it is necessary to guarantee that the printer is using the correct Lookup table to get the best performance. Make sure you have a Windows PC to start this process and follow the instructions in the file downloaded previously to this PC: *PrinterUpdateToolCPW5000DW\_EN\_20210405.pdf*

To make sure you have the correct LUT in each condition, you can check it in the printer test print:

. - On your printer press MENU -> [+] -> Enter -> [+] ->Enter, and the test print will be printed:

```
< LUT >
A : SLTAX270
B1 : SLTBX271 C1 : SLTCX271
B2 : SLTBX272 C2 : SLTCX272
B3 : SLTBX273 C3 : SLTCX273
B4 : SLTBX274 C4 : SLTCX274
B5 : SLTBX275 C5 : SLTCX275
B6 : SLTBX276 C6 : SLTCX276
B7 : SLTBX277 C7 : SLTCX277
```

Current LUT

```
< LUT >
A : SLTA7180
B1 : SLTBX271 C1 : SLTCX271
B2 : SLTBX272 C2 : SLTCX272
B3 : SLTB7183 C3 : SLTC7183
B4 : SLTB7184 C4 : SLTC7184
B5 : SLTB7185 C5 : SLTC7185
B6 : SLTBX276 C6 : SLTCX276
B7 : SLTBX277 C7 : SLTCX277
```

HG LUT

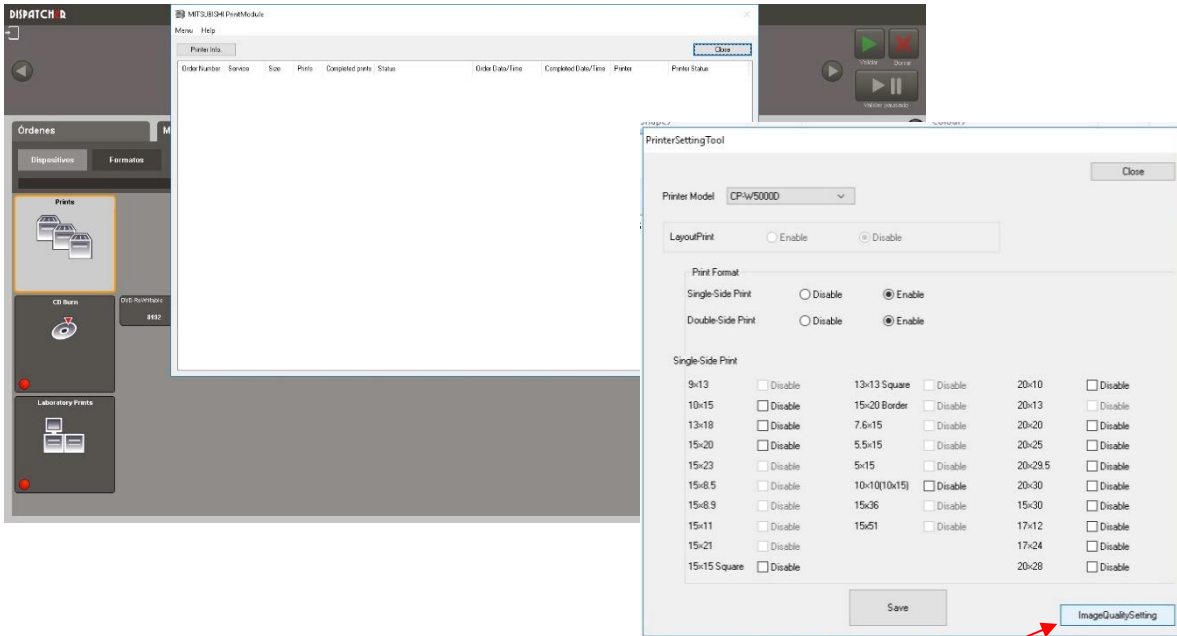
### 4. ICC profile Installation/Update on PC

Please open the downloaded file and follow the corresponding instructions to install the profile depending on if you are using windows OS or Mac OS.

*LUT update and ICC Profile Installation for HG media.pdf*

## 5. ICC profile installation/update on Mitsubishi printing System (printmodule)

- a) Go to Printmodule settings from Dispatcher and then Menu-> Printer Setting Tool



Click on ImageQualitySetting

- b) Select printer model CP-W5000  
c) Select the correct profile which you previously stored in the following route:

D:\KERNEL\SERVICE\_MODULE\Curve\W5000

New media: CPW5000DW\_HG.icc

Current media: W5000\_A4\_Q2\_CL\_2016-04-28.icc

- d) Click save button  
e) Close Printmodule setting

